



Oldham
Council

Delegated Decision

Adoption of Highways – Development at Acacia Road, Oldham – Mulberry Close

Report of: Deputy Chief Executive – People and Place

Officer contact: Alison Dolan, Senior Technical Admin
Ext. 4333

25 March 2019

Reason for Decision

To obtain approval for the adoption of highways as Highway Authority and to identify the likely associated revenue costs to the Council.

Executive Summary

The schedule lists the highways to become adopted as maintainable at the public expense.

Recommendation

It is recommended that the highways listed in Schedule 1 of this report be adopted as highways maintainable at public expense.

Adoption of Highways – Development at Acacia Road, Oldham – Mulberry Close

1 Background

- 1.1 This report is the conclusion of the process by which a private developer constructs highways for maintenance at the public expense for the benefit of the development.

2 Current Position

- 2.1 The highways in Schedule 1, described below and indicated on the attached location plan, have been constructed in accordance with the approved specification for highways to be adopted.

3 Schedule 1

3.1 Development at Acacia Road, Oldham

Mulberry Close	From the existing adopted highway at Acacia Road and continuing in a generally north north easterly direction for a distance of 69 metres to its cul-de-sac end with associated turning heads of (1) in a north westerly direction for a distance of 11 metres at the gable of No 11 Mulberry Close and (2) continuing in a generally easterly direction for a distance of 22 metres at the gable of No 27 Mulberry Close. Area = 990 m ²
----------------	---

4 Actions Proposed

- 4.1 The following action is proposed:

to adopt, on behalf of the Council as Highway Authority, the highways specified in Schedule 1 above as highways maintainable at public expense, effective immediately.

5 Options/Alternatives

- 5.1 Option 1: To approve the recommendation.
5.2 Option 2: Not to approve the recommendation.

6 Preferred Option

- 6.1 The preferred option to approve is Option 1.

7 Financial Implications

Revenue Implications

7.1 This proposal will increase annual maintenance costs as follows:

Item	Annual Cost £	Funded from Cost Centre
1. Adopting 990 sq m of Highway @ £0.70/sq m	693	40350 (Highways Operations)
2. 5 No. additional lighting columns (@ £90/column)	450	40400 (Street Lighting)
Total	1,143	

7.2 If there are in year budget pressures within the above areas, the Directorate will have to manage its resources to ensure that there is no adverse variance at the year end.

Capital Implications

7.3 There are no capital implications contained within this proposal.

(Sadrul Alam/Nigel Howard)

8 Legal Services Comments

8.1 None. (A Evans)

9 Co-operative Agenda

9.1 There are no Co-operative issues or opportunities arising and the proposals are in line with the Council's Ethical Framework.

10 Human Resources Comments

10.1 None.

11 Risk Assessments

11.1 None.

12 IT Implications

12.1 None.

13 **Property Implications**

13.1 None.

14 **Procurement Implications**

14.1 None.

15 **Environmental and Health & Safety Implications**

15.1 In adopting the highway, the Local Authority is taking on responsibility for maintaining it in a safe condition.

16 **Equality, community cohesion and crime implications**

16.1 By adopting this highway, public rights of access will be safeguarded.

17 **Equality Impact Assessment Completed?**

17.1 No.

18 **Key Decision**

18.1 No.

18 **Key Decision Reference**

18.1 Not applicable.

19 **Background Papers**

19.1 The following is a list of background papers on which this report is based in accordance with the requirements of Section 100(1) of the Local Government Act 1972. It does not include documents which would disclose exempt or confidential information as defined by the Act :

None.

APPROVAL

Decision maker

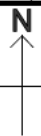
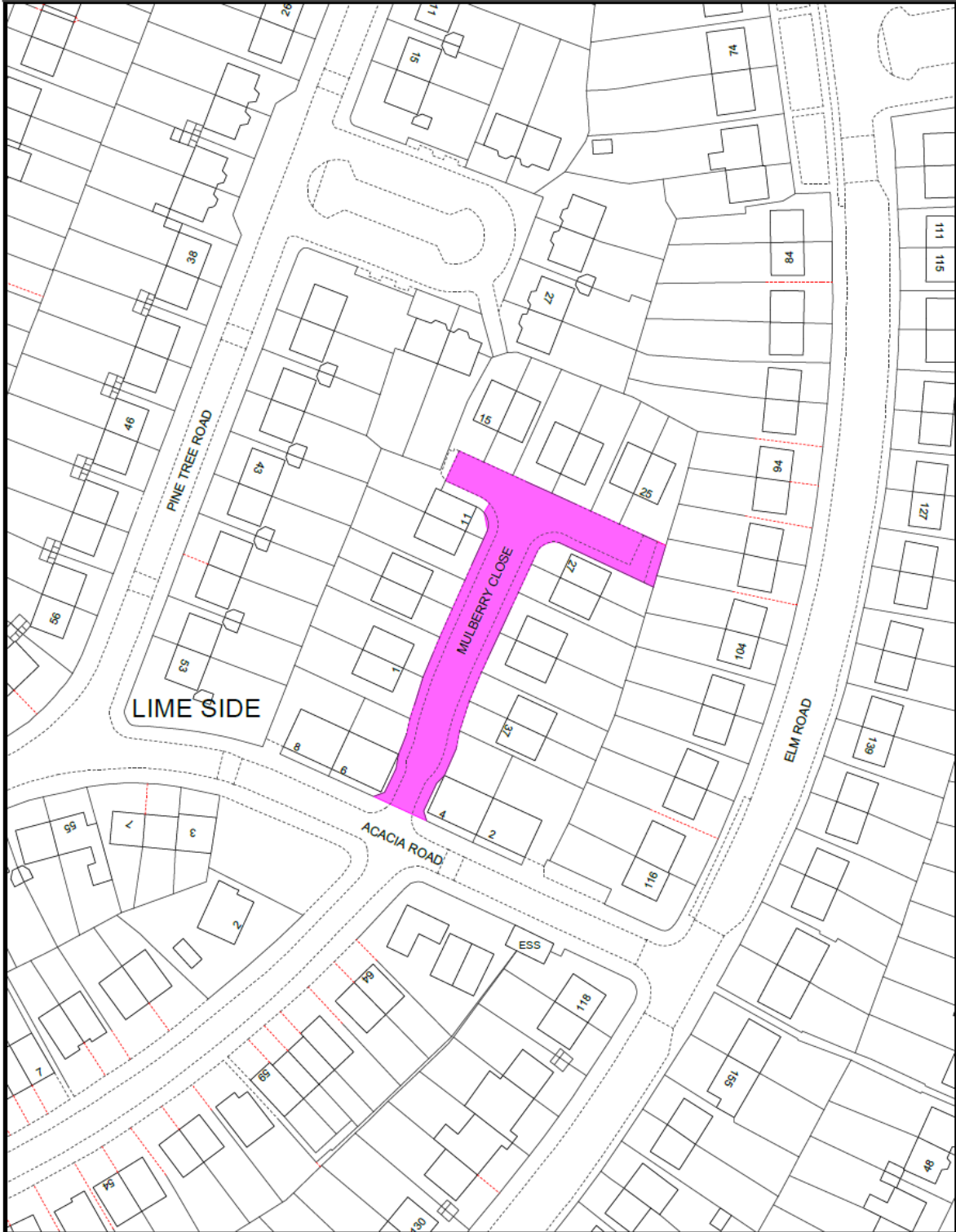
Signed 
Cabinet Member,
Neighbourhood Services

Dated: 28/03/19

In consultation with

Signed 
Director Of Environmental
Services

Dated: 26/03/19



Production Date: 13th March 2019
Scale 1:1000 *when printed at A4*
© Crown copyright and database rights 2019
Ordnance Survey licence 0100019668

